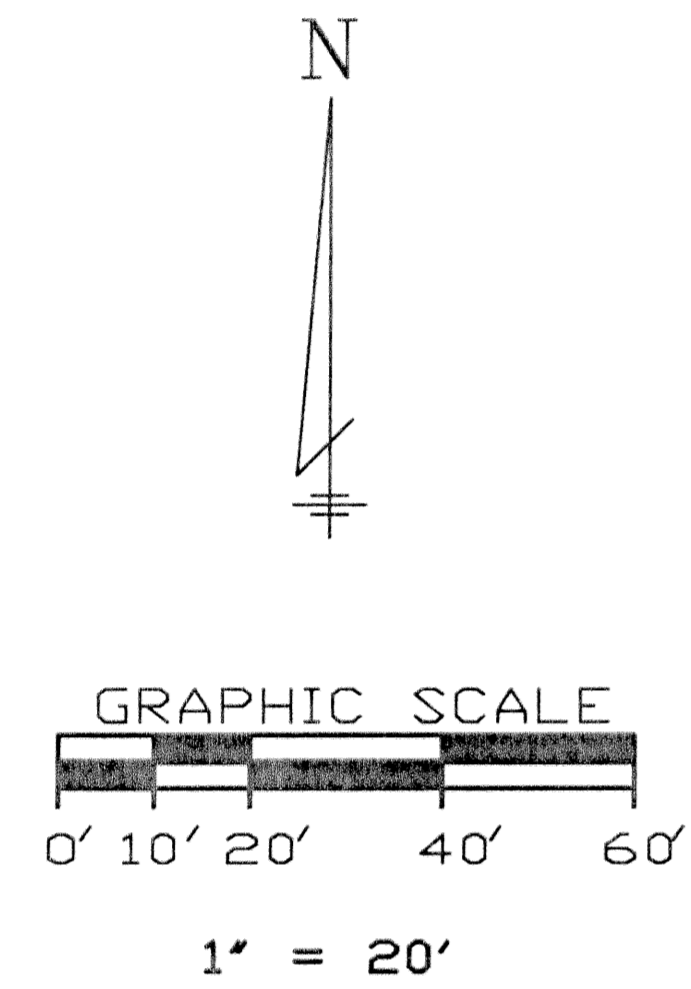


WASHINGTON MUTUAL DELRAY BEACH

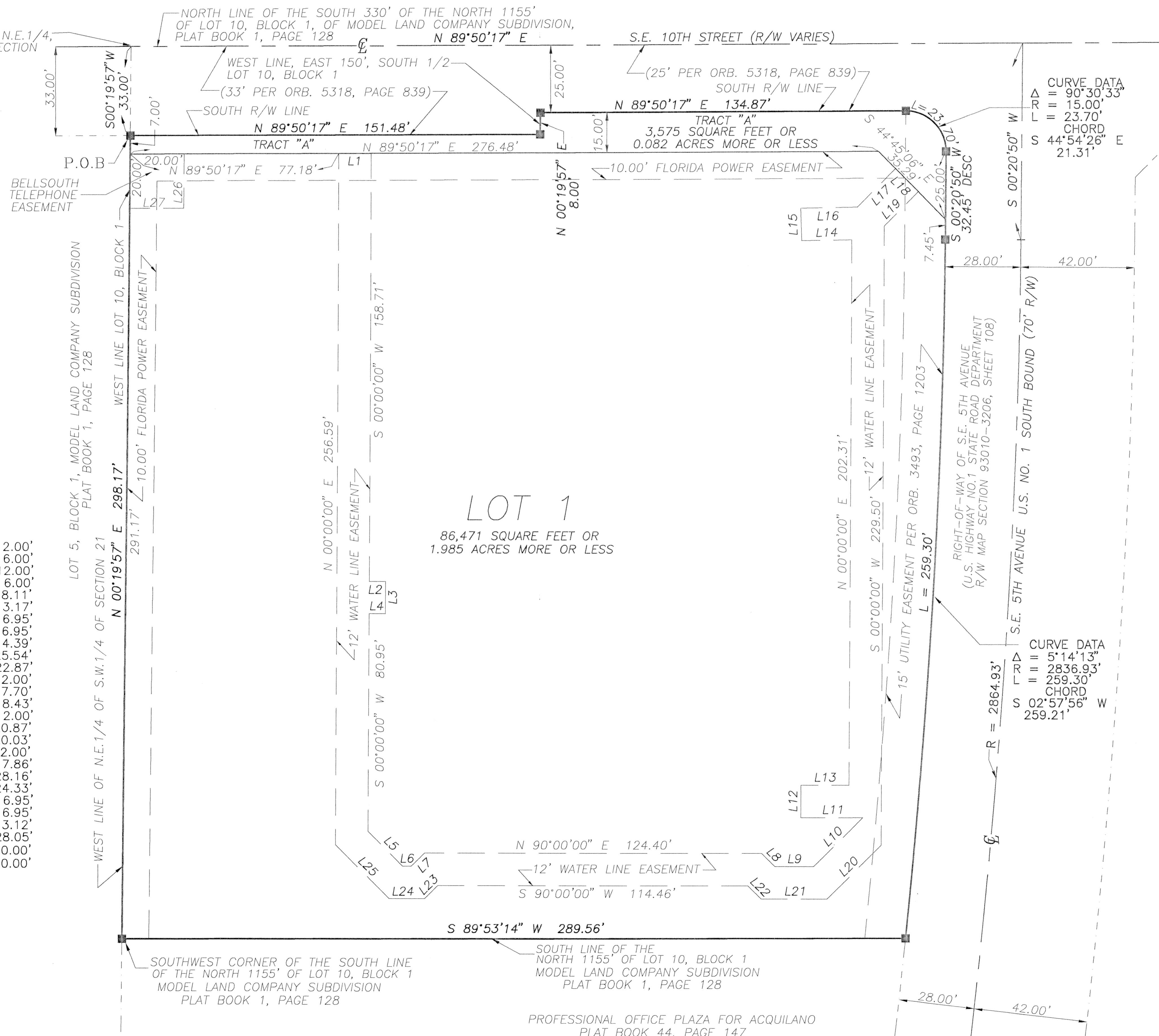
A REPLAT OF A PORTION OF LOT 10, BLOCK 1, MODEL LAND COMPANY SUBDIVISION
 LOCATED IN THE CITY OF DELRAY BEACH, SECTION 21, TOWNSHIP 46 SOUTH, RANGE 43 EAST, PALM BEACH COUNTY, FLORIDA.

COUNTY OF PALM BEACH
 STATE OF FLORIDA
 THIS PLAT WAS FILED FOR RECORD
 AT DAY OF
 THIS 200, AND DULY
 RECORDED IN PLAT BOOK
, PAGE.....
 DOROTHY H. WILKEN, CLERK OF
 THE CIRCUIT COURT
 BY:
 D.C.

P.O.C.
 N.W. CORNER, N.E.1/4,
 S.W.1/4 OF SECTION
 21-46-43



LINE	BEARING	DISTANCE
L1	N 89°50'17" E	12.00'
L2	N 90°00'00" E	6.00'
L3	S 00°00'00" W	12.00'
L4	S 90°00'00" W	6.00'
L5	S 45°00'00" E	18.11'
L6	N 90°00'00" E	3.17'
L7	S 45°00'00" E	6.95'
L8	S 45°00'00" E	6.95'
L9	N 90°00'00" E	14.39'
L10	N 45°00'00" E	25.54'
L11	S 90°00'00" W	22.87'
L12	N 00°00'00" E	12.00'
L13	N 90°00'00" E	17.70'
L14	S 89°07'20" W	18.43'
L15	N 02°00'41" W	12.00'
L16	N 89°07'20" E	20.87'
L17	N 45°00'00" E	20.03'
L18	S 44°45'06" E	12.00'
L19	S 45°00'00" W	17.86'
L20	S 45°00'00" W	28.16'
L21	S 90°00'00" W	24.33'
L22	N 45°00'00" W	6.95'
L23	S 45°00'00" W	6.95'
L24	S 90°00'00" W	13.12'
L25	N 45°00'00" W	28.05'
L26	N 00°19'57" E	20.00'
L27	N 89°50'17" E	20.00'



CURVE DATA
 $\Delta = 90^{\circ}30'33''$
 $R = 15.00'$
 $L = 23.70'$
 CHORD
 $S 44^{\circ}54'26'' E$
 $21.31'$

CURVE DATA
 $\Delta = 5^{\circ}14'13''$
 $R = 2836.93'$
 $L = 259.30'$
 CHORD
 $S 02^{\circ}57'56'' W$
 $259.21'$

- LEGEND**
- --- CENTERLINE SYMBOL
 - Δ CENTRAL ANGLE
 - \blacksquare CONCRETE MONUMENT (CM)
 - DB DEED BOOK
 - ESMT EASEMENT
 - FND FOUND
 - GIS GEODETIC INFORMATION SYSTEM
 - IP IRON PIPE
 - \circ IRON ROD (IR)
 - L ARC LENGTH
 - LB LICENSED BUSINESS
 - LS LICENSED SURVEYOR
 - MEAS MEASURED
 - N&D NAIL & DISK
 - NTS NOT TO SCALE
 - PC POINT OF CURVATURE
 - PCP PERMANENT CONTROL POINT
 - PG PAGE
 - PJ POINT OF INTERSECTION
 - POB POINT OF BEGINNING
 - POC POINT OF COMMENCEMENT
 - PRM PERMANENT REFERENCE MONUMENT
 - PT POINT OF TANGENCY
 - R CURVE RADIUS
 - R/W RIGHT OF WAY

ACCURIGHT SURVEYS
 of Orlando Inc., LB 4475
 2012 E. Robinson St.
 Orlando, Florida 32803
 (407) 894-6314

PROFESSIONAL OFFICE PLAZA FOR ACQUILANO
 PLAT BOOK 44, PAGE 147